

RS422-Moni : UART1\_RX, UART4\_RX or USART2\_RX  
 R1 : OFF  
 R2 : OFF

RS422-Test : UART1\_TX, UART4\_RX or USART2\_RX  
 R1 : ON  
 R2 : OFF

RS485-Test : UART1\_TX, UART1\_RX  
 R1 : OFF  
 R2 : ON

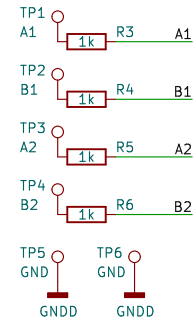
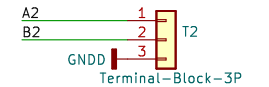
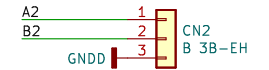
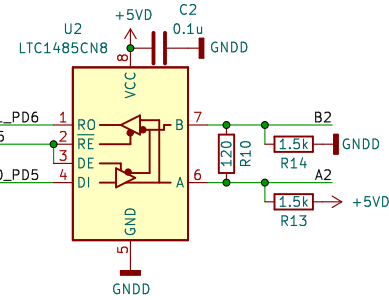
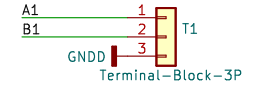
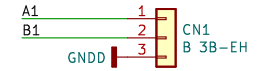
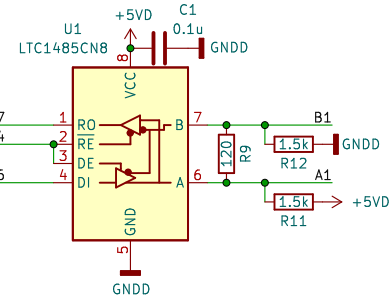
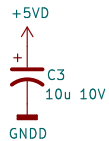
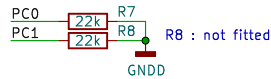
RS485-Test : UART4\_TX or USART2\_TX, UART4\_RX or USART2\_RX  
 R1 : ON  
 R2 : ON

UART4\_RX or USART2\_RX

UART4\_TX or USART2\_TX

F446RE : PA0 : UART4\_TX  
 : PA1 : UART4\_RX

F405VG : PD5 : USART2\_TX  
 : PD6 : USART2\_RX



**Revive**

Sheet:  
 File: IF\_N446RE\_RS422\_485.kicad\_sch

**Title: IF-UART-RS422-485-V1**

Size: A4 Date: 2024-02-22

KiCad E.D.A. kicad 7.0.1

Rev: 1

Id: 1/1